

STC	API-205M	API-215M
Nominal peak power	205W	215W
Open circuit voltage	36.3V	36.7V
Max. power voltage	27.6V	28.5V
Short circuit current	7.92A	8.06A
Max. power current	7.42A	7.56A
module efficiency	12.5%	13.2%
Power output tolerances	±3%	
Max. system voltage	600 VDC	
Max.series fuse rating	15A	
Operating temperature	- 40°C to + 85°C	

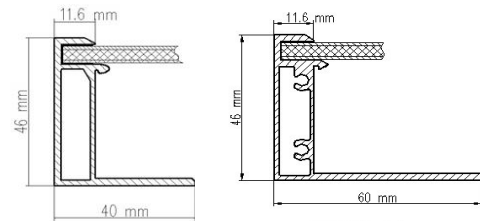
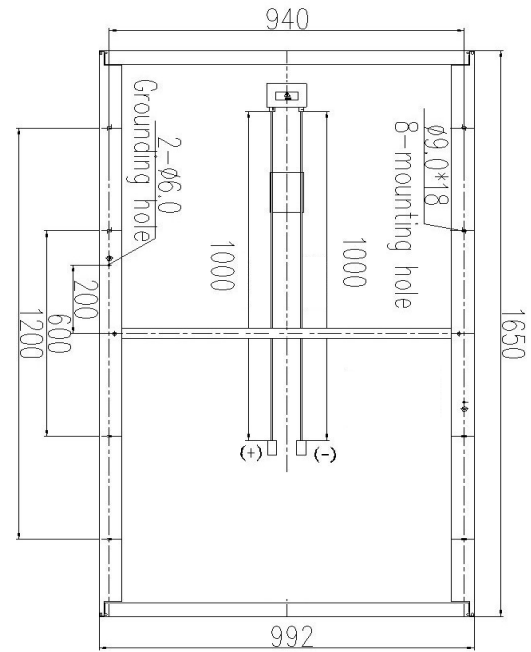
*Electrical parameters at STC (1,000 W/m², 25°C, AM 1.5 according to EN 60904-3)

NOCT	API-205M	API-215M
Nominal peak power	146W	154W
Open circuit voltage	33.0V	33.4V
Max. power voltage	24.3V	25.1V
Short circuit current	6.42A	6.53A
Max. power current	6.01A	6.12A
NOCT	46°C±2°C	

*Electrical parameters at NOCT (800 W/m², 20°C, AM 1.5 according to EN 60904-3)

Temperature coefficients	
γ _{Pm}	-0.47%/K
α _{sc}	0.056%/K
β _{Voc}	-0.34%/K

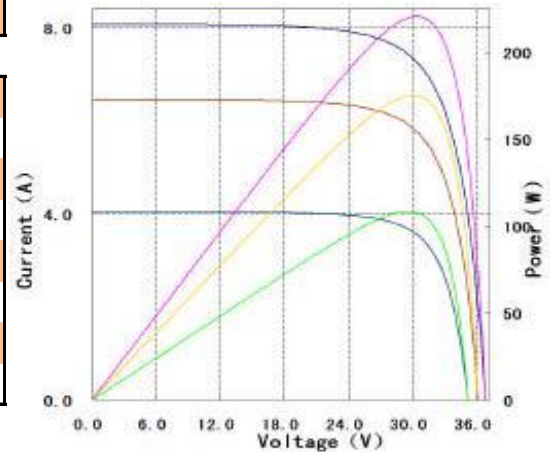
Mechanical parameters	
Module dimension	1650*992*46(mm)
Weight	23.0kg
Max. wind Load	2400pa
Max. snow Load	5400pa
Cell dimension	156*156
Cell type	60(6*10) / Monocrystalline
Packing method	546pcs/40'HC 390pcs/40'



SECTION B-B

SECTION A-A

Current, power VS voltage characteristics
(solar irradiant: 100%, 80%, 50%)



Advance Solar, Hydro, Wind Power Co., Inc. Since 1978

6331 N. State Street, Redwood Valley, CA 95470, USA

(Toll Free) 1.888.228.9694, or 707.485.0588

www.advancepower.net

